



## ALUMINIUM ACCESS COVERS

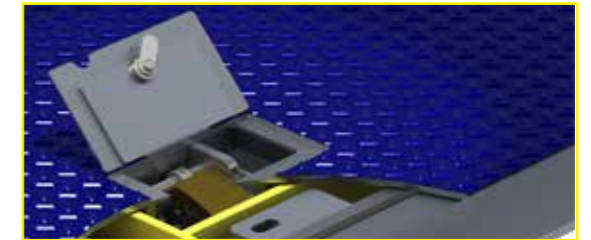
Safe, Innovative & Functional Access  
Solutions for the Water Industry

# Safety Access Covers

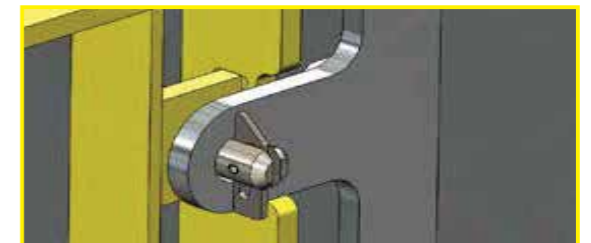
Austral International Safety Access Covers are the perfect aesthetically pleasing and functional solution for water authorities who recognise the need for a safety solution that protects their personnel from the dangers of pump station maintenance.

Developed with the ethos of “zero harm” the Austral Safety Cover is different from other covers in that it was developed specifically for Pump Stations, meaning that all features are targeted at issues often ignored in more general access cover design.

- Lightweight and ergonomic design.
- Fold up safety grate provides four sided access protection, compliant to handrail height requirement of 900mm.
- Safety grates painted in high visibility “safety yellow”.
- Safety grate design allows access gates to operate independently enabling access to one pump at a time whilst still maintaining a four sided barricade.
- Full aluminium construction for corrosion resistance and longevity.
- Confined space danger sign affixed to underneath of hatch cover.



- Lock box with sliding bolt that fits any standard water authority padlock.



- Locking safety catch holds safety grate in position at 90°.



- Support strut locks lid securely in upright position.



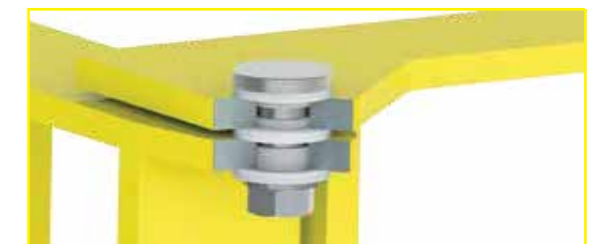
- The heavy duty aluminium extrusion has a curved outer rim and low profile that is aesthetically pleasing, reduces trip hazards and allows lid to finish flush. Cover protrudes only 16mm above pump station coverslab.
- Engineered heavy duty top hung design, no fixing required through side of access cover frame.



- Safety grates fold down with vertical supports perfectly overlapping and provides good visibility into wet well without needing to expose operator to the void.
- Vertical support spacing allows operator to withdraw float switches and instruments without having to raise safety grates.



- Captive seal profile in flexible ABS eliminates sewer gas egress and prevents ingress of stormwater to the wet well.
- Flush mounting continuous hinge further eliminates trip hazards; can be removed and replaced easily.



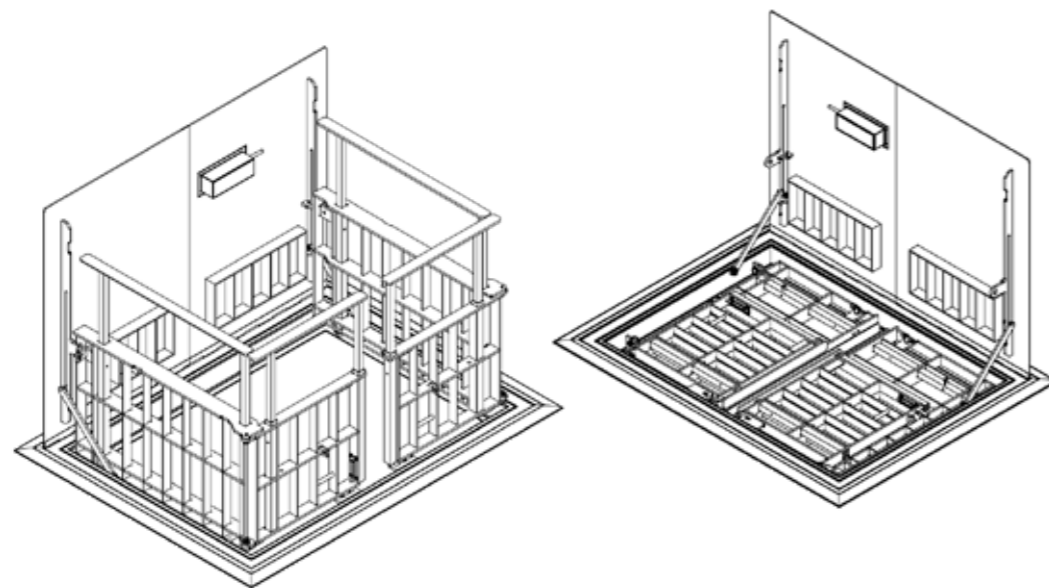
- Stainless steel hinge pins with isolating nylon bushes.

# FSP Premium Series

The FSP Series Premium Four Sided Austral Safety Cover is the ultimate in void protection; with its unique folding gate system the operator is never needlessly exposed to the open void.

The gates are designed in compliance with the Australian Standard AS 1657:2018 handrail height requirement of 900mm. For the smaller sized covers, a telescopic rail system is utilised to provide a gate at a safe working height.

The FSP Series Safety Gate design allows the access gates to operate independently to enable access to one pump at a time whilst still maintaining a four sided barricade.



## FSP Premium Series Cover Stock Sizes

| Model   | Frame Outside Dimension | Clear Opening Size | Lid & Grate Specification                  |
|---------|-------------------------|--------------------|--|
| FSP1410 | 1397mm x 997mm          | 1200mm x 900mm     | Single Part Lid with Standard Folding Gate |
| FSP1690 | 1590mm x 90mm           | 1400mm x 800mm     | 2 Part Lid with Telescopic Folding Gate    |
| FSP2013 | 1997mm x 1301mm         | 1800mm x 1200mm    | 2 Part Lid with Standard Folding Gate      |

Any Custom Size or Design Available on Request

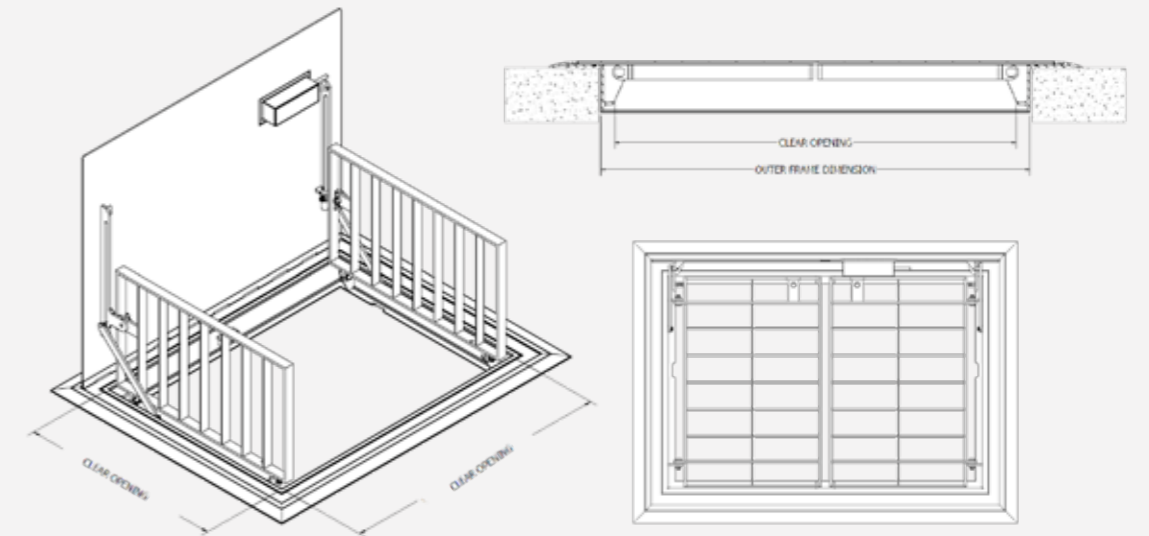
\* Standard manufacturing tolerances apply to all above sizes.

\*\* Austral International reserve the right to change sizes & specifications without notice.

# TSP Dual Safety Grate Series

The TSP Series Three Sided Austral Safety Covers with dual fall arresters are a practical and economical solution for a wide range of applications with the benefit of a stylish cover with integral void protection.

The TSP Series Covers share a lot of the same features as the Premium Four Sided Cover and offer extremely good value for money, making them the ideal choice for industrial, commercial and smaller municipal applications. All standard size TSP Series Safety Covers are rated to class B loading.



## TSP Series Cover Stock Sizes

| Model   | Frame Outside Dimension | Clear Opening Size | Lid & Grate Specification            |
|---------|-------------------------|--------------------|--------------------------------------|
| TSP6060 | 590mm x 590mm           | 482mm x 514mm      | Single Lid with Single Safety Grate  |
| TSP9060 | 890mm x 590mm           | 750mm x 514mm      | Single Lid with Dual Safety Grates   |
| TSP9090 | 890mm x 890mm           | 750mm x 814mm      | Single Lid with Dual Safety Grates   |
| TSP1068 | 1040mm x 676mm          | 900mm x 600mm      | Single Lid with Dual Safety Grates   |
| TSP1290 | 1190mm x 890mm          | 1050mm x 814mm     | Single Lid with Dual Safety Grates   |
| TSP1398 | 1340mm x 976mm          | 1200mm x 900mm     | Single Lid with Dual Safety Grates   |
| TSP1312 | 1340mm x 1276mm         | 1200mm x 1200mm    | Two Part Lid with Dual Safety Grates |

Any Custom Size or Design Available on Request

\* Standard manufacturing tolerances apply to all above sizes.

\*\* Austral International reserve the right to change sizes & specifications without notice.

## Custom Retro-Fit Designs

The Austral International Safety Cover is the answer for every situation where there is a requirement for void fall protection, best suited for new pump station designs, they can also be easily customised and retro-fitted to existing sites in variety of configurations.

Contact us today and discuss your requirement with our in-house design and engineering team and let us provide you the perfect turnkey solution, from design through to installation. Make Austral International your choice for your next Aluminium Access Safety Cover Project.

Project 15638 | Safety Access Cover for Pump Station



Project 15789 | Safety Access Cover for Pump Station



## Pump Station Accessories

We offer a range of pump station accessories suited to compliment our access covers.

### Stainless Steel Hanger | Code: ZSH-316

The ZSH-316 is a single hook hanger manufactured in 316 stainless steel and convenient for pairing with the AKL 801/SS for suspending instruments or on it's own as an individual hanger point.



### SS Cable Clamp | Code: AKL801/SS

The AKL 801/SS anchor clamp is ideal for hanging float switches, hydrostatic probes and other instruments in the wet well. The support clamp is manufactured from non-corrosive materials, the housing being stainless steel and the clamping jaws are reinforced fibreglass.



### SS Locking Latch | Code: ALL-316

The ZSH-316 is a single hook hanger manufactured in 316 stainless steel and convenient for pairing with the AKL 801/SS for suspending instruments or on it's own as an individual hanger point.



### Float Switches | Code: MS1-10

Nolta MS1-10 float switches are a heavy duty, non-weighted, robust municipal float switch engineered especially for use in sewage works and pump stations in liquids heavily charged with solid matter such as raw sewage, etc. The tear drop shape helps to keep the float clean and the MS1-10 has a 10 degree switching angle making it ideal for applications with limited swinging space.



 1300 010 151

 [sales@australint.com.au](mailto:sales@australint.com.au)

 [australint.com.au](http://australint.com.au)

 **Austral**  
international