



# ALUMINIUM SAFETY COVERS

Safe, Innovative and Functional  
Access Solutions for the Water Industry

# Safety Access Covers

Austral International Safety Access Covers are the perfect aesthetically pleasing and functional solution for water authorities that recognise the need for a safety solution that protects their personnel from the dangers of pump station maintenance. Developed with the ethos of "zero harm" the Austral safety cover is different from other covers in that it was developed specifically for Pump Stations, meaning that all features are specifically targeted at issues often ignored in more general access cover design.

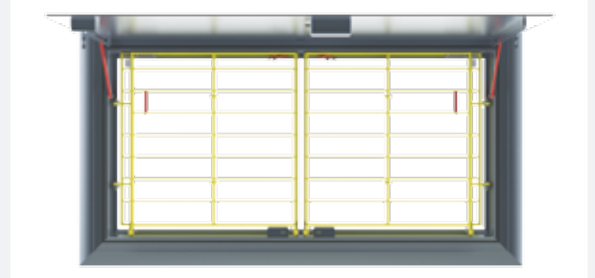
- Lightweight ergonomic design with no lift being greater than 20 Kg.
- Fold up safety grate to provided four sided access protection, compliant to handrail height requirement of 900mm.
- Safety grates painted in high visibility "safety yellow".
- Safety grate design allows access gates to operate independently to enable access to one pump at a time whilst still maintaining a four sided barricade.
- Full aluminium construction for corrosion resistance and longevity.
- Confined space danger sign affixed to underneath of hatch cover.



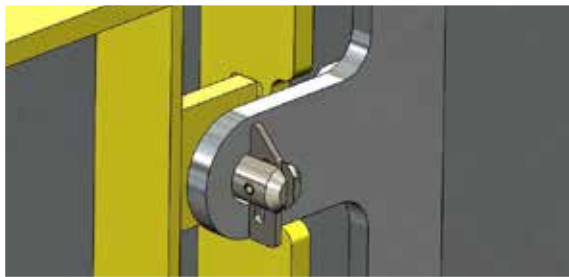
# Standard Features



- Heavy duty aluminium extrusion with curved outer rim, low profile that is an aesthetically pleasing design reducing trip hazards and allowing lid to finish flush. Cover protrudes only 16mm above pump station coverslab.
- Engineered heavy duty top hung design, no fixing required through side of access cover frame.



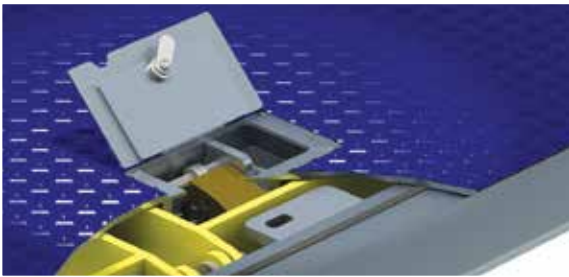
- Safety grates fold down with vertical supports perfectly overlapping to provide good visibility into wet well without needing to expose operator to the hole.
- Vertical support spacing allows operator to withdraw float switches and instruments without having to raise safety grates.



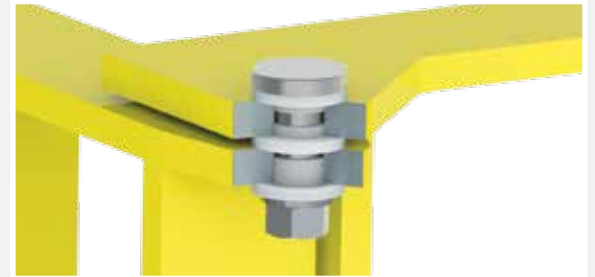
- Locking safety catch to hold safety grate in position at 90°.



- Support strut to lock lid securely in upright position.



- Lock box with sliding bolt that fits any standard water authority padlock.



- Stainless steel hinge pins with isolating nylon bushes.



- Captive seal profile in flexible ABS to eliminate sewer gas egress and prevent ingress of stormwater to the wet well.
- Flush mounting continuous hinge to further eliminate trip hazards; can be removed and replaced easily.



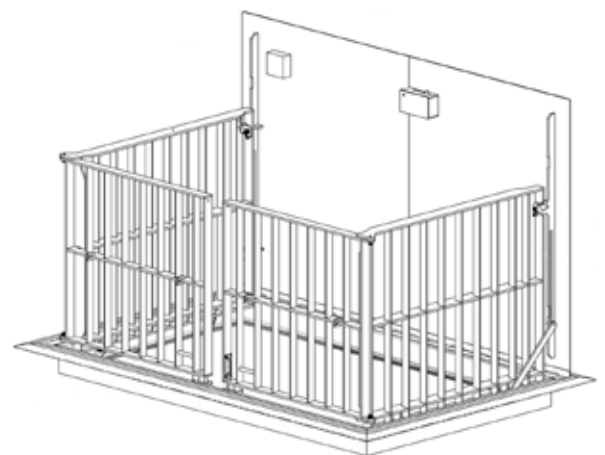
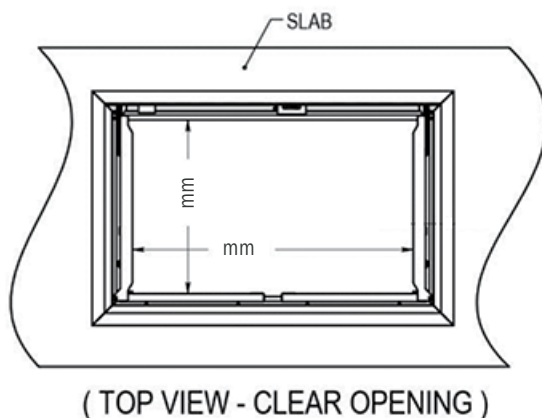
- Confined space danger sign affixed to the underneath hatch cover.

# FSP Premium Series

The FSP Premium Four Sided Austral Safety Cover is the ultimate in void protection; with its unique folding gate system the operator is never needlessly exposed to the open void.

The height of the gates is designed compliant to a handrail height requirement of 900mm. For the smaller sized covers, a telescopic rail system is utilised to provide a rail at a safe working height.

The FSP Series Safety Gate design allows the access gates to operate independently to enable access to one pump at a time whilst still maintaining a four sided barricade.



## FSP Premium Series Covers Standard Sizes

	Void Size - W x D	Clear Opening Size	Lid and Gate Specification
FSP1212	1200mm x 1200mm	1050mm x 1050mm	Single Lid with Folding Safety Gate
FSP1690	1600mm x 900mm	1400mm x 800mm	2 Part Lid with Telescopic Folding Safety Gate
FSP1810	1800mm x 1000mm	1600mm x 900mm	2 Part Lid with Telescopic Folding Safety Gate
FSP2010	2000mm x 1000mm	1800mm x 900mm	2 Part Lid with Standard Folding Safety Gate
FSP2013	2000mm x 1300mm	1800mm x 1200mm	2 Part Lid with Standard Folding Safety Gate

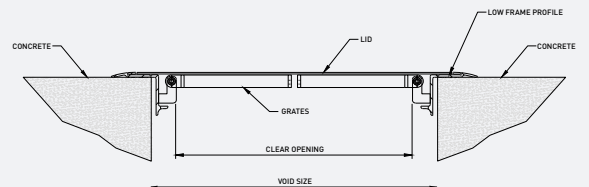
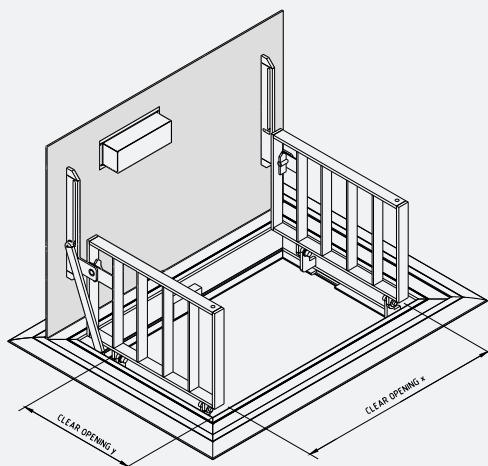


# TSP Series - Dual Safety Grate Covers

The TSP Series Safety Covers with dual fall arresters are a practical and economical solution for a wide range of applications with the benefit of a stylish cover with integral void protection.

The TSP Series covers share a lot of the same features as the Premium Four Sided Cover and offer extremely good value for money, making them the ideal choice for industrial, commercial and smaller municipal applications.

All standard size TSP Series Safety Covers are rated to at least class B loading.



## TSP Series Covers Standard Sizes

	Void Size - W x D	Clear Opening Size	Lid and Grate Specification
TSP6060	600mm x 600 mm	480mm x 510mm	Single Lid with Single Safety Grate
TSP9060	900mm x 600 mm	750mm x 510mm	Single Lid with dual Safety Grate
TSP9090	900mm x 900 mm	750mm x 810mm	Single Lid with dual Safety Grate
TSP1068	1050mm x 690mm	900mm x 600mm	Single Lid with dual Safety Grate
TSP1290	1200mm x 900 mm	1050mm x 810mm	Single Lid with dual Safety Grate
TSP1212	1200mm x 1200 mm	1050mm x 1140mm	Two Part Lid and dual Safety Grates
TSP1398	1350mm x 990mm	1200mm x 900mm	Two Part Lid and dual Safety Grates
TSP1312	1350mm x 1290mm	1200mm x 1200mm	Two Part Lid and dual Safety Grates
TSP1598	1500mm x 990mm	1350mm x 900mm	Two Part Lid and dual Safety Grates
TSP1698	1650mm x 990mm	1500mm x 900mm	Two Part Lid and dual Safety Grates

## Custom Retro-Fit Designs

The Austral International Safety Cover is the answer for every situation where there is a requirement for void fall protection, best suited for new pump station designs, they can also be easily customised and retro-fitted to existing sites in variety of configurations.

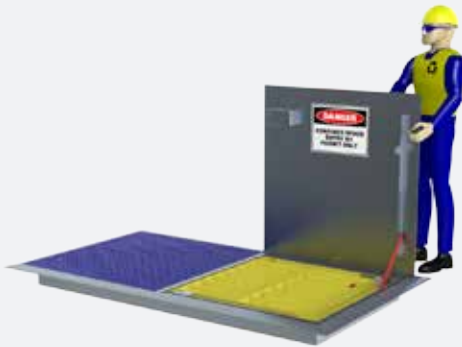
Contact us today and discuss your requirement with our in-house design and engineering team and let us provide you the perfect turnkey solution, from design through to installation, make Austral International your choice for your next Aluminium Access Safety Cover Project.



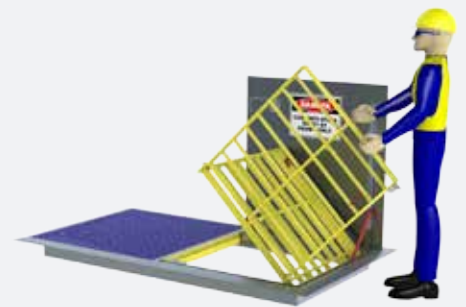
# FSP Premium Series

Quick and easy steps to peace of mind safety

**STEP 1.**



**STEP 2.**



**STEP 3.**



**STEP 4.**



**STEP 5.**



**STEP 6.**





## CONTACT DETAILS

Sydney  
02 8459 0318

Brisbane  
07 3613 9738

Melbourne  
03 8514 5188

Perth  
08 6355 5298

Hobart  
03 6240 4709

Darwin  
08 8919 4408

Adelaide  
08 7160 1180

Global  
+61 3 6165 1251